
V7-RTS

Instruction Manual



DESCRIPTION

The V7-RTS is a controller for heating of a swimming pool with a solar collector. Two pumps are controlled and the solar pump can be locked to the circulation pump if required for retrofit/integrated plumbing.

INSTALLATION INSTRUCTIONS

CONTROLLER MOUNTING

Find a suitable location to mount the control box. Ideally as with all pool equipment it should be installed out of direct weather and no closer than 3 meters from the water's edge and a minimum 600mm of the ground. Lift up the two mounting tabs and use two appropriate screws to mount the control box to the wall, keeping in mind that the power cable is 1.8m long and should be plugged directly into a general power outlet, not into an extension lead.

Mount the pump and sanitiser according to the manufacturer's instructions.

PUMP CONNECTIONS

The pool circulating pump plugs into the 240V socket labelled AUX. PUMP [*see sanitiser].

The solar collector pump plugs into the 240V socket labelled SOLAR PUMP.

The maximum combined load for both sockets is 9.98 AMPS at 2395W.

SANITISER CONNECTION

The sanitiser (Ioniser, Chlorinator or Ozoniser etc.) can be connected to the 240V socket labelled AUX. PUMP, then plug the pool circulating pump into the sanitiser. Set the sanitiser to operate 24 hours per day since the V7-RTS Controller will control the number of hours per day the unit will operate. Refer to the sanitiser instructions for 24 hour timer set-up and dosing requirements.

POOL SENSOR

The pool sensor must be fitted into the heating circuit, as close to the pool as practical, preferably in a position out of direct sunlight. It is recommended that a 14.5mm hole be drilled in the side of the PVC pipe (not the top of the pipe where water will collect), this can be carried out using a Dontek PDO1 grinding drill or a small pilot hole can be drilled with a 14.0mm drill-bit used spinning in a counter clockwise direction to minimize the chance of shattering pipe. Insert the grommet into the pipe and gently push in the sensor barb. Ideally ~30cm of the cable from the sensor should be tied to the shaded side of the pipe to prevent extreme ambient conditions

leeching into the sensor via the copper in the cable. The blue sensor plug is to be fitted to the plug socket marked POOL.

ROOF SENSOR

The roof sensor must be fitted into a small piece of rubber collector material away from the main collector but on the same aspect, preferably no more than 50cm from the roof gutter (for ease of sensor replacement). If required the roof sensor can be on a different roof as the solar collector as long as the alignment to the sun is similar to the solar collector. For encapsulated collector panels use the manufacturer's instructions for roof sensor placement. The red sensor plug is to be fitted to the plug socket marked ROOF.

SENSOR NOTES: All excess cable must be removed; coils of cable are not permitted under any circumstances and **must not** be tied to 240V wiring. If the cable is to be extended with non-genuine cable a size of 14/020 should be used. **Any cable joins should be soldered.** Heat shrink is to be used over soldered joints to eliminate moisture ingress. If the cable end is to be refitted to the plug sockets then the polarity must be observed as incorrect polarity will show an error as stated in Fault Diagnosis. The sensor cable with the red wire (or white) is the positive and should be fitted to the right hand cable entry when the screws are in a vertical position. Once cables have been correctly fitted the unit can be turned on.

RECOMMENDED PLUMBING

See Diagrams under INSTALLER SETUP

OPERATING INSTRUCTIONS

LCD SCREEN

In automatic mode the LCD screen displays the pool and roof temperatures, filter timer settings, solar temperature limit, on/off/locked-out status and the time of day & date [clock]. In manual backwash mode the controller displays the pump status and time to return to auto.

LED INDICATORS

AUX. ON – 240V socket labelled AUX. PUMP is ON.
SOLAR ON – 240V socket labelled SOLAR PUMP is ON.

ENTER/MANUAL BUTTON

The controller always starts in automatic mode of operation. When this button is pressed the following is shown on the LCD screen;

```
FOR MANUAL MODE  
PRESS ENTER NOW
```

The above message is displayed for ~3 seconds, simply wait and the controller will return to automatic operation. Any delays active will be cancelled by this action.

If the ENTER/MANUAL button is pressed for a second time within a 3 second period, the display will indicate you have entered manual pump mode;

```
ON 4HR  
ENTER = NEXT/END
```

The AUX. PUMP will be turned on or off, timeout is set to 4 hours before it returns to automatic mode. Press the ↑ or ↓ buttons to adjust the timeout period, when you scroll through the 4 hour period the pump will toggle between on/off. Hold the ENTER/MANUAL button to return to automatic mode. Solar heating is disabled in this mode.

↑ AND ↓ BUTTONS (CONTROLLER SETTINGS)

To change controller settings enter the SETTINGS MENU by pressing the ↑ or ↓ buttons.

The following will be displayed;

```
SETTINGS MENU  
1) MAN/BACKWASH
```

The menu system can be navigated using the ↑ or ↓ buttons, all selectable and changeable values will flash on the LCD screen. Press the

ENTER/MANUAL button to accept the currently displayed [flashing] item.

All menu items are shown below;

```
SETTINGS MENU  
1) MAN/BACKWASH  
2) FILTER TIMER  
3) TEMPERATURE  
4) SOLAR MODE  
5) SYSTEM SETUP  
6) SAVE & EXIT
```

1) MAN/BACKWASH

```
ON 4H  
ENTER = NEXT/END
```

This menu is manual control of the circulating pump [filtration], whenever you enter this menu the circulating pump will toggle between on/off and all heating is turned off. You can adjust the period that manual filtration runs for, after the required time the controller reverts to automatic operation. When you scroll through the 24 hour period the pump will toggle between on/off. Pressing the ENTER/MANUAL button will return you to the SETTINGS MENU.

2) FILTER TIMER

When the FILTER TIMER is selected the following is displayed;

```
No. OF TIMES PER  
DAY TO RUN: x
```

Select the number of times per day you wish the circulation pump to operate for filtration purposes. If OFF is selected then the pump will only operate for heating purposes, otherwise the following is displayed;

One time per day menu:

```
FILTER CYCLE  
xx:xx TO xx:xx
```

Twice per day FILTER CYCLE 1 menu:

```
FILTER CYCLE 1  
xx:xx TO xx:xx
```

Twice per day FILTER CYCLE 2 menu:

```
FILTER CYCLE 2  
xx:xx TO xx:xx
```

Adjust the start time and end time for the required filter cycle[s], the circulation pump will run between these times for filtration purposes.

FILTER TIMER NOTES

1. Take care not to overlap filter cycle 2 times with the filter cycle 1 times as the result will be one cycle per day.
2. For 24 hour filtration set to run 1 time per day with the start & end times the same [E.g. 12:00 – 12:00].
3. If the unit is configured as a series retro-fit and solar is not locked to the filter timer then any solar gain will over-ride the filter timer to operate circulating pump for solar heating.
4. In winter mode the 2nd filter cycle does not run if it is set to disabled in winter mode.

**Factory Default is ON, one time per day from 09:00 to 17:00 [the 2nd cycle default is 17:00-21:00]

3] TEMPERATURE

When the temperatures menu is selected the following is displayed;

```
SET TEMPERATURE:  
SOL. LIMIT xx.x°
```

Adjusting the temperature limit will allow the controller to heat pool until the temperature limit + $\frac{1}{2}$ °C is achieved, heating will then remain off until the sample wait period expires, if no sample wait period is active the heating will remain off until the pool temperature drops $\frac{1}{2}$ °C below the temperature limit setting, due to rounding the actually heating hysteresis is $\pm\frac{1}{2}$ °C.

The ability to solar heat the pool will depend on weather conditions.

** The factory default for SOL. LIMIT is 30°C

4] SOLAR MODE

When the solar mode menu is selected the following is displayed;

```
SET SOLAR MODE  
SUMMER      WINTER/AWAY    TROPICAL
```

SUMMER MODE is the normal operation of heating the swimming pool.

TROPICAL MODE is selected if you wish to cool an overheated swimming pool, if the pool temperature is equal to or above the solar limit temperature limit by 1.5°C then tropical mode is activated. The solar pump will run if the roof temperature is colder than the pool until SOL LIMIT is obtained; note that this is most likely to occur at night. Note that tropical mode may be activated by the anti-boil function.

WINTER/AWAY MODE, when selected you will be prompted to select the start month of winter and the start month of summer. Once the winter months have been set an option to disable the 2nd filter cycle is displayed, selecting 'NO' will not allow the filter cycle 2 to run during the selected winter months. Winter/Away Mode assists in the systems off-season maintenance and save energy as solar gain may be available but swimming temperature cannot be achieved or solar heating is not desired. A 3 minute flush of the solar collector occurs between the solar start time and the end time, providing the roof temperature is equal or greater than the pool, but if that condition does not occur before 1pm [13:00] then a solar system flush will be forced to occur. A start month of 'always' can be selected which permanently sets the unit into winter mode, you can also start winter mode in August and finish in March if required [i.e. for Northern Hemisphere].

**The factory default for SOLAR MODE is SUMMER MODE

5) SYSTEM SETUP

When the system setup menu is selected 6 options are available;

SET CLOCK, INSTALLER SETUP, FACTORY DEFAULTS, TEST FUNCTION, TEMPERATURE LOGS and EXIT.

The following sub menus are displayed dependent on your selection;

SET CLOCK - Allows you to adjust calendar date and time of day.

EXIT - Will return you to 5) SYSTEM SETUP with no changes.

TEMPERATURE LOGS - Logs min/max temperatures & time of occurrence, also displays run times for pumps and heater, NO support is offered for this feature.

TEST FUNCTION - Turns on the internal relays in sequence then turns all relays off.

FACTORY DEFAULTS - Restores ALL the settings to the factory default state.

INSTALLER SETUP

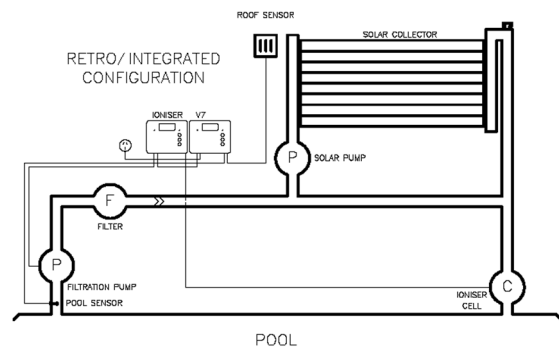
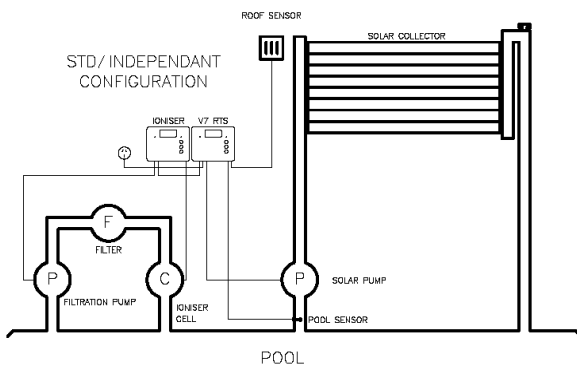
INSTALLER SETUP - This sub-menu is for installer's ONLY;

The following sub menus are available under installer setup;

PLUMBING CONFIG:
INDEPENDENT/STD
or

PLUMBING CONFIG:
SERIES RETRO-FIT

Select series retro-fit [integrated] if the solar pump requires feed from the circulating pump, select independent/STD if the solar system is plumbed separate from the filtration line. See images below for typical set-ups.



****Warn the customer not to change from series retro-fit as damage may occur****

USE SOLAR DRAIN? NO/YES

If NO is selected then the valve will close if solar heating is no longer required. If YES is selected the follow menu is presented;

DRAIN IS TO STOP

PUMP FOR xx MINS

[RANGE = 03-15 MINUTES]

The controller stops all pumps for the selected number of minutes, the valve is left in the solar collector position for the first minute [even] then the valve is turned to bypass the solar collector for the second minute [odd] this repeats for the selected duration for odd and even numbered minutes elapsed. This allows for the water to

drain out of the solar collectors before the pool pump is restarted. If the pool is not at solar limit during the drain process and solar heating becomes available the system will resume heating. The system may delay the drain process if the pool is below limit and if the roof temperature is above the pool temperature.

LOCK TO FILTER? NO/YES

[ONLY SHOWN FOR SERIES RETRO-FIT]

Selecting NO allows the solar to override the filter timer to run the circulation pump for solar heating during the allowed solar times. Selecting YES will only allow the solar to run while the filter timer is active.

ALLOW SOLAR FROM

xx:xx TO xx:xx

[NOT SHOWN IF 'YES' WAS SELECTED ABOVE]

[RANGES = 06:00-12:00 AND 12:00-21:00]

This setting will not allow the solar system to run outside of the times set. (Select 12:00-12:00 to always allow solar.)

USE LIVE SENSOR? NO/YES

You have the option to select a 'LIVE' sensor, select YES for a commercial system where the pool sensor is in constant water flow, selecting NO [recommended] will turn on the sampling feature where the controller assumes that pipe temperature is not always pool temperature.

ROOF TEMPERATURE

START DIFF x.x°

[RANGE = 4.0°-40.0°C]

ROOF TEMPERATURE

STOP DIFF x.x°

[RANGE = 1.0°-(START -2°C)]

ROOF TEMPERATURE

MIN. ROOF xx.x°

[RANGE = OFF, 10.0°C-60.0°C]

You can choose to modify the differentials, the start differential is the temperature the roof needs to rise above the pool temperature to start the pump; the end differential stops the pump when the roof drops below the pool temperature plus the end differential. Minimum Roof temperature is minimum temperature for the roof sensor for the system to start [Off = feature disabled].

FREEZE PROTECT? OFF/ON

[RANGE 1.0°C-6.0°C]

An adjustable anti-freeze feature is provided for freeze protection, when the roof temperature drops to the anti-freeze temperature the pumps are run for 3 minutes followed by a 30 minute rest period, this will continue until the roof temperature rises above the anti-freeze set point.

BOIL PROTECT? OFF/ON

[RANGE = 55.0-99.0°C]

ANTI BOIL RUNS PUMP FOR xx

[RANGE = 03-59 MINS]

An adjustable anti-boil feature is provided to prevent overheating of plastics on encapsulated collector panels. When the roof temperature rises above the anti-boil set point the pumps are run for an adjustable period followed by the sample wait period, note that a pool temperature

of 38°C or higher will prevent anti-boil from starting and that it will force tropical mode of operation this usually indicates a fault, i.e. pump not priming, rectify the fault and re-select summer mode.

CALIBRATE POOL SENSOR BY: x.x

[RANGE -5.0 TO +5.0°C]

This is for the + series sensor only (TS02P), the TS02SC is internally calibrated and therefore the calibrate value will be ignored.

**Factory default for installer setup is series retro-fit, no solar drain, solar locked to filtration, no live sensor used, Start Differential of 8°C End differential of 4°C, Minimum Roof of 20°C, Freeze protect is OFF, Boil protect is OFF.

6) SAVE & EXIT

When this menu is selected, push the ENTER/MANUAL button to save ALL settings, the controller will then return to automatic operation.

NOTE: If any of the menu items are left unattended for 3 minutes the menu will time out and automatically save all settings and return to automatic operation.

NOTES:

1. If a sensor fault is detected the controller will display which sensor and what the fault is.
2. Should power be interrupted for any reason, the controller will resume normal operation when power is restored, all information will have been kept.
3. The sensor cable with the red trace is the positive and is usually fitted to the right hand side of the plug when looking at the plug screws, incorrect polarity may be displayed as a short circuit or reversed fault.
4. If the controller has stopped pumping and is displaying a higher temperature than expected it may be caused by a pump which is failing to prime, check the pump and if necessary prime the pump as per the pump manufacturers' instructions then reset the controller by turning it off/on.
5. Maximum combined rated output load for the 240V socket[s] is 9.98 Amps / 2395 Watts.
6. Degree of protection against moisture: IP23.

WARRANTY - V7 RTS

This range of product is covered by a limited 3 year warranty against component failure or faulty workmanship from the date of installation. Faulty units should be returned in the first instance to the dealer from which the unit was purchased. Damage to the unit due to misuse, power surges, lightning strikes or installation that is not in accordance with the manufacturer's instruction may void the warranty. Valves and actuators are covered by a twelve month warranty at the discretion of their manufacturer.

Warranty does not cover travel costs to or from installation site.

If the power cord is damaged, do not use the controller; return the unit to the supplier for repair.

CUSTOMER RECORD [To be retained by the customer]

DEALER/INSTALLER NAME

SERIAL NUMBER

DATE INSTALLED

For service assistance phone 1300 130 693



Dontek Electronics Pty Ltd

www.dontek.com.au

PO Box 239, Bayswater VIC 3153 Australia

Phone: +613 9762 8800 Email: sales@dontek.com.au