

Dontek Electronics

Pool Sensor Replacement Instructions

Step 1. - Disconnect pool sensor plug

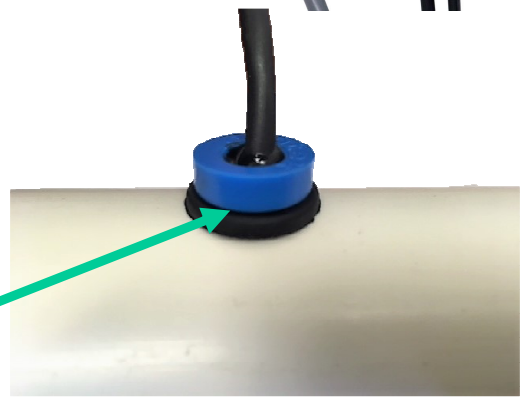
Before starting, turn power off to the controller and disconnect from power outlet. If equipment is below water level, close any isolating valves.

Pool sensors are usually connected at the bottom right corner of Dontek Solar Controllers; to the left of the roof sensor plug. Disconnect the pool sensor by pulling down on the plastic plug.



Step 2. - Locate the pool sensor probe

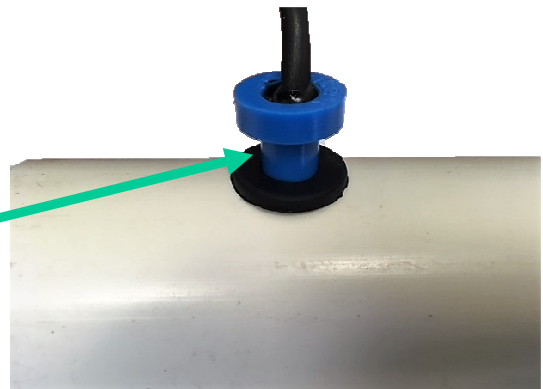
Pool sensor probes are usually inserted in the plastic water pipe going into the solar pump. If you cannot find it, trace it's location by following the cable back from the sensor plug. The top of the probe sits on a rubber seal and is about the size of a 10 cent coin.



Step 3. - Disconnect the pool sensor probe

Take hold of the sensor probe, and in a rolling motion, pull the probe out. It stops coming out after about 10 mm. as a barb reaches the rubber seal; continue pulling and it will come out. The rubber seal usually stays in place.

Watch out for any water that may come out of the hole!



Step 4. - Connect the new pool sensor

Your new pool sensor can now be plugged into the controller and the probe inserted into the water pipe, in a rolling motion. The rubber seal need only be replaced with the new one if it comes out or is damaged. Tidy up any loose cable, preferably with cable ties. Reopen any isolating valves and switch power back on to the controller.

